

The Seasons

Year 1

Knowledge Organiser

spring

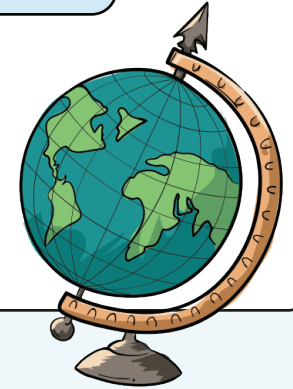
summer

autumn

winter

Each year we experience these **four seasons**.

The seasons are caused because the **Earth is spinning on a tilt**.



spring

Spring is usually in the months **March, April and May**. In spring the days start to get longer and a bit warmer. New plants grow and the **trees grow their leaves back**.

Many animals **have babies** such as birds, cows, sheep and ducks.



summer

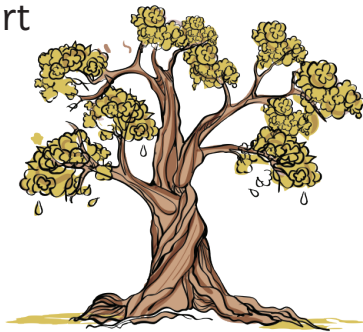
Summer is usually in the months **June, July and August**. In summer the **days are at their longest** and the **weather is the warmest**.

The trees are **full of leaves**.



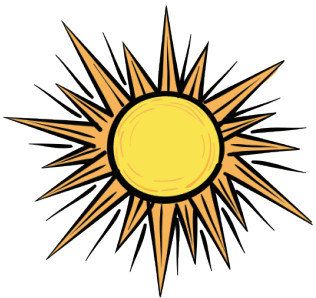
autumn

Autumn is usually in the months **September**, **October** and **November**. In autumn the amount of time it is light becomes less which means it gets **darker earlier**. The leaves start to **change colour** and **fall off some of the trees**.



winter

Winter is usually in the months **December**, **January** and **February**. In winter we have colder weather, **sometimes snow** and frost. **Some trees** have no leaves and the amount of time it is light during the **day is at its shortest**.



sun



rain



wind



snow



thunderstorm

